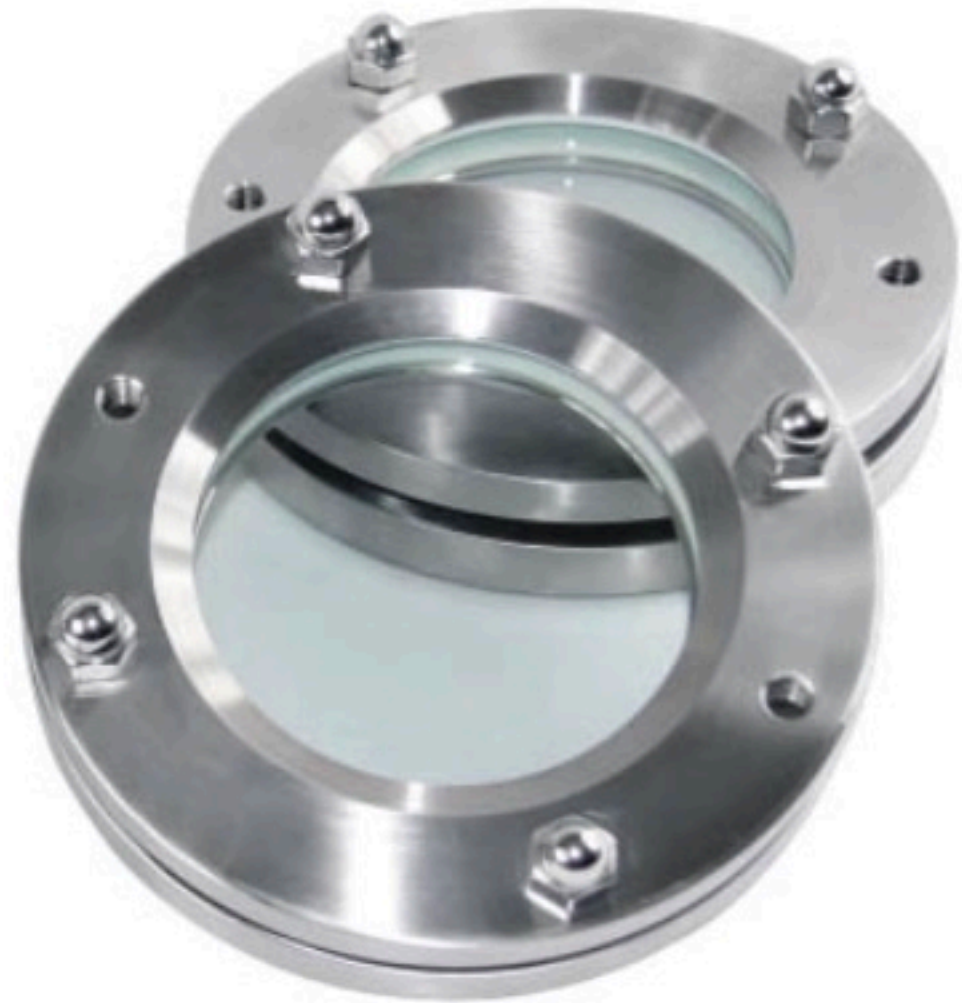


Flange sight glasses



Applications

◆ Flange sight glasses is comprised of stainless steel frame and tempered glass. Through it, operator can observe the flowing of the media clearly and precisely in the fields of food, cosmetics, pharmaceutical and fine chemicals industries.

Technical specifications

- ◆ Size from 1.5"-8"-DN40-DN200
- ◆ Assemble flange with glass by using hexagon socket bolts
- ◆ Gasket material: PTFE in accordance with FAD 177.1600
- ◆ Material: AISI 304(1.4301) AISI 316L(1.4404)
- ◆ Max. Temperature: -10°C-120°C
- ◆ Max. Pressure: 10bar

Function Options

- Wireless power supply, one charging can use 2-3 months (Depending on the frequency)
- Cable power supply AC110V-220V, one charging can use 2-3 months (Depending on the frequency)
- Cable power supply DC24V
- No retention, zero dead angle, high light, white cold light source, waterproof, explosion-proof



Clamp Union sight glass



Applications

- ◆ It is used viewing the biologic reactor, blender in laboratory, fitter, processing container, pipeline and other closed container. Especially apply in pharmacy, food and beverage processing, such as the brewery, dairy.
- ◆ Dust scraping device mainly solves glass transparency decreases in the media because of the glass is immersed in a medium for a long time.
- ◆ The main structure: nuts and clamp connections in two designs, with a circular transparent glass.

Technical specifications

- ◆ Gasket ring: EPDM FPM, FDA177.2600
- ◆ The parts contact with medium: 1.4301(304); 1.4404(316L)
- ◆ Pressure: Vacuum-10bar
- ◆ Temperature: -10°C / 130°C
- ◆ Size: 1.5"-DN40 to 4"-DN100



Straight Sight glass



Applications

◆ Straight Sight glass is comprised of stainless steel frame and tempered glass. Through it, operator can observe the flowing of the media clearly and precisely in the fields of food, cosmetics, pharmaceutical and fine chemicals industries.

Technical specifications

- ◆ Size: DN25/1"-DN150/6"
- ◆ Full port design
- ◆ Grid-like protective cover
- ◆ Can be used vertically or horizontally
- ◆ Working temperature: -10°C-130°C
- ◆ Max pressure:10bar
- ◆ Connections: Clamp, weld, thread, DIN SMS RJT ISO IDF ASME BPE DIN 11864

